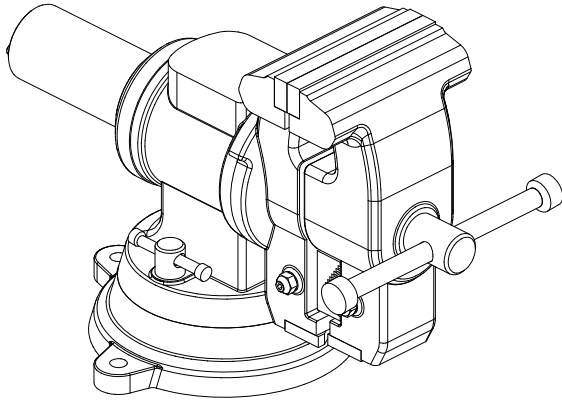


# PALMGREN®

## 5" MULTI-JAW BENCH VISE



### DESCRIPTION

Palmgren 5" Multi-Jaw Bench Vise has a cast iron body and replaceable hardened steel jaws. The vise features parallel jaws, pipe jaws and V-jaws. Vise will swivel 360° on the base and lock in any position. The jaws can rotate 360° and lock in any position. Anvil on the body of vise provides a convenient work surface.

### SAFETY RULES

- Read, understand and follow all instructions in this manual. Misuse of vise can cause serious injury to the operator.
- Bolt or clamp vise to work surface at all three mounting locations using mounting flanges provided on base.
- Be sure vise is locked in both the swivel and rotation direction before attempting to mount workpiece between jaws.
- Be sure workpiece is clamped securely between jaws.
- Do not over tighten—vise can develop a large clamping force. Use only force which is needed.
- Do not try to hold workpieces which exceed the jaw capacity of vise.
- Do not use vise as a press to assemble or disassemble objects.

**WARNING:** Always wear eye and face protection when striking vise-held objects or when using power tools with the vise.

### SPECIFICATIONS

Refer to Figure 1.

Stock No.	9629503A
Jaw Width (A)	5-1/8"
Throat Depth (B)	3-1/2"
Overall Height (H)	10-5/8"
Overall Length (L)	16-1/2"

Base Width (W)	9-1/2"
Maximum Jaw Opening	4"
Maximum Pipe Jaw Capacity Ø	3-1/2"
Maximum V-Jaw Opening Ø	4-1/2"

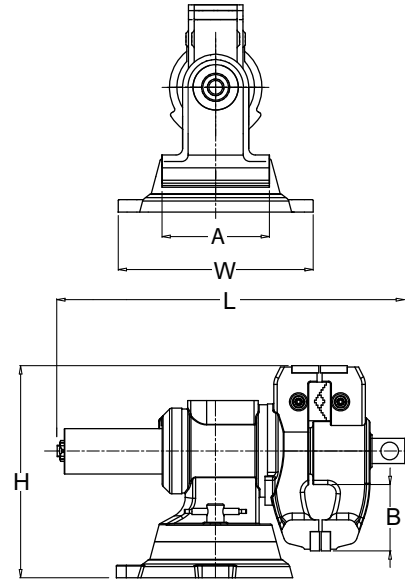


Figure 1 – Dimensions

### OPERATION

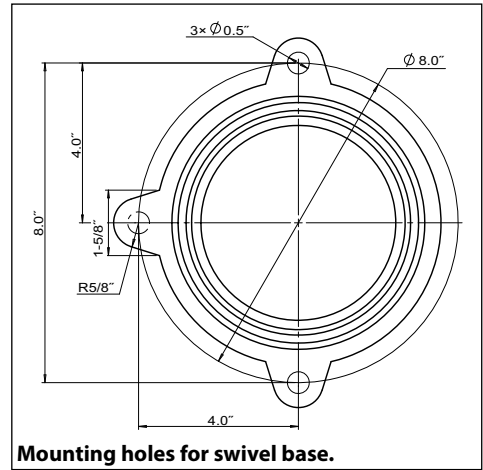
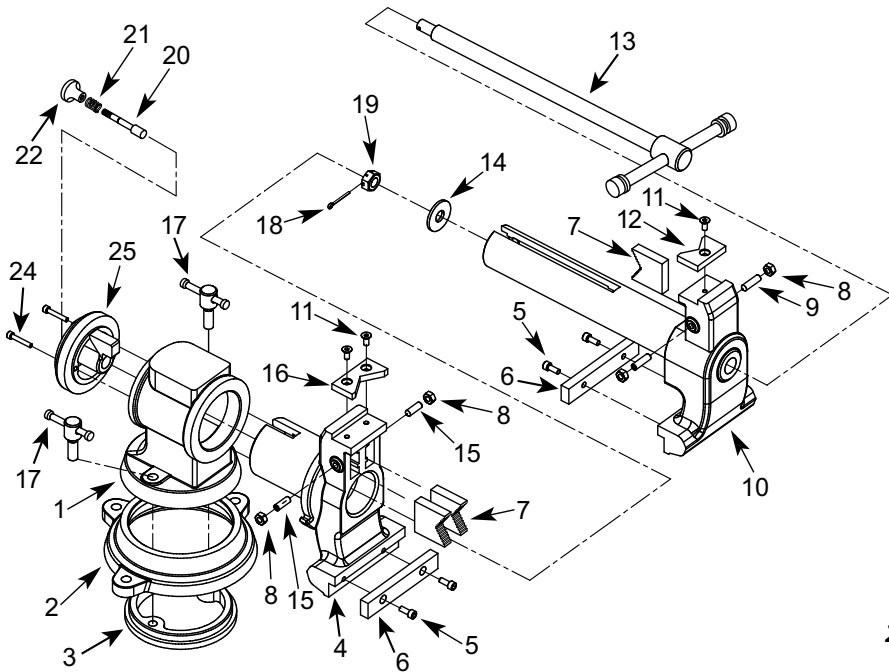
Refer to Figure 2.

- Mount vise to work surface in desired location by securing all three mounting flanges located on base (Ref. No. 2). Use three 7/16" diameter bolts, 2 inches longer than the bench top thickness, flat washers and nuts (not supplied). Do not weld vise to any metal object. Make sure the bench top to which the vise is mounted is properly secured.
- Secure vise in position by hand tightening the lock handles (Ref. No. 17). Do not use a pipe extension or cheater bar. This may cause handles to bend and overstress locking bolt threads.
- To adjust the angle of the jaws, loosen bolts (Ref. No. 24), pull out lock pin knob (Ref. No. 22) and rotate the jaws. The lock pin knob can also be used to quickly set the jaws at eight positions, 45° apart. Set the jaws at the required angle and retighten the bolts.
- Open jaws of vise and place workpiece between jaws in desired position. Secure workpiece between jaws by rotating leadscrew handle (Ref. No. 13). Be sure workpiece is held securely in vise. Never use hammer, pipe extension or cheater bar on leadscrew handle of vise.

### MAINTENANCE

Particles of metal or wood can damage machined surfaces, causing difficult or inaccurate operation.

- The vise is shipped with a protective coating. This coating should be removed before operation. Use penetrating oil to remove protective coating.
- Keep machined surfaces and all moving parts clean and free of dirt, chips and foreign materials.
- Keep machined surfaces lubricated with medium weight machine oil.



Mounting holes for swivel base.

**PALMGREN**

*Palmgren - a C.H. Hanson Company*  
 2000 N. Aurora Rd., Naperville, IL 60563 U.S.A.  
 or call 1-800-827-3398

**REPLACEMENT PARTS LIST FOR 9629503A**

Ref. No.	Description	Part No.	Qty.	Ref. No.	Description	Part No.	Qty.
1	Body	963262400	1	14	Spacer	963263300	1
2	Base	963262500	1	15	8-1.25 x 25mm Set Screw	†	2
3	Clamping Plate	963262600	1	16	V-Jaw Insert	†	1
4	Stationary Jaw	963262700	1	17	Lock Handle Assembly	963263500	2
5	6-1.0 x 12mm Socket Head Bolt	†	4	18	Cotter Pin	963263600	1
6	Standard Jaw Plate Set (Set Includes 5 & 6)	963262800	1	19	14-1.5mm Slotted Hex Nut	963263700	1
7	Pipe Jaw Set (Set Includes 7, 8, 9, & 15)	963262900	1	20	Lock Pin	963263800	1
8	8-1.25mm Hex Nut	†	4	21	Spring	963263900	1
9	8-1.25 x 30mm Set Screw	†	2	22	Knob	963264000	1
10	Movable Jaw	963263000	1	24	5-0.8 x 30mm Socket Head Bolt	*	2
11	6-1.0 x 16mm Flat Head Screw	†	3	25	Rear Cover	963264200	1
12	V-Pipe Jaw Set (Set Includes 11, 12 & 16)	963263100	1	Δ	Optional Copper Jaw, Set	9629762	
13	Lead Screw with Handle	963263200	1				

(Δ) Not shown. (N/A) Not available as repair part. (\*) Standard hardware item, available locally. (†) Part is only available as part of set.

**PALMGREN WARRANTY**

C.H. Hanson / Palmgren warrants their products to be free of defects in material or workmanship. This warranty does not cover defects due directly or indirectly to misuse, abuse, normal wear and tear, failure to properly maintain the product, heated, ground or otherwise altered, or used for a purpose other than that for which it was intended.

The warranty does not cover expendable and/or wear part (i.e. v-belts, screws, abrasives, jaws), damage to tools arising from alteration, abuse or use other than their intended purpose, packing and freight. The duration of this warranty is expressly limited to the terms noted below beginning from the date of delivery to the original user.

**The Palmgren branded items carry the following warranties on parts:**

**All arbor presses, vises, clamps, positioning tables, tombstones, jack screws and vise accessories - LIFETIME.**

**All bench grinders, drill presses, tapping machines, band saws, lathes, milling machines, abrasive finishing machines and work stands - 3 YEARS.**

The obligation of C.H. Hanson / Palmgren is limited solely to the repair or replacement, at our option, at its factory or authorized repair agent of any part that should prove inoperable. Purchaser must lubricate and maintain the product under normal operating conditions at all times. Prior to operation become familiar with product and the included materials, i.e. warnings, cautions and manuals.

**Failure to follow these instructions will void the warranty.**

This warranty is the purchaser's exclusive remedy against C.H. Hanson for any inoperable parts in its product. Under no circumstances is C.H. Hanson liable for any direct, indirect, incidental, special or consequential damages including loss of profits in any way related to the use or inability to use our products. This warranty gives you specific legal rights which may vary from state to state.